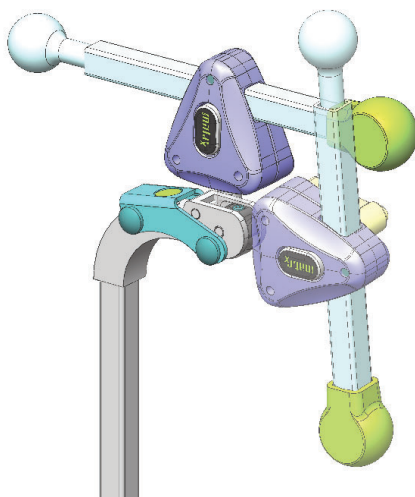


# Matrx<sup>®</sup>

# FLIPP LOXX<sup>™</sup>

## HEADREST MOUNTING HARDWARE

*(includes **Standard**, **Mini** and **Extended** Hardware Options)*



## INSTALLATION AND SET-UP

DEALER: This manual **MUST** be given to the user of the product.

USER: Before using this product, read this manual and save for future reference.

## **WARRANTY (Matrx® Accessories)**

This warranty is extended only to the original purchaser/user of our products. This warranty gives you specific legal rights and you may also have other legal rights which vary from state to state. Invacare/Motion Concepts warrants this product to be free from defects in materials and workmanship for three months of use by original purchaser. This warranty does not apply to punctures, tears or burns, nor to the removable cushion cover. If within such warranty period any such product shall be proven to be defective, such product shall be repaired or replaced, at Invacare's/Motion Concepts' option, with refurbished or new parts. This warranty does not include any labor or shipping charges incurred in replacement part installation or repair of any such product. Product repairs shall not extend this warranty - coverage for repaired product shall end when this limited warranty terminates. Invacare's/Motion Concepts' sole obligation and your exclusive remedy under this warranty shall be limited to such repair and/or replacement. For warranty service, please contact the dealer from whom you purchased your Invacare/Motion Concepts product. In the event you do not receive satisfactory warranty service, please write directly to Invacare/Motion Concepts at the address on the back cover. Provide dealer's name, address, model number, the date of purchase, indicate nature of the defect and, if the product is serialized, indicate the serial number. Invacare Corporation/Motion Concepts will issue a return authorization. The defective unit or parts must be returned for warranty inspection using the serial number, when applicable, as identification within thirty (30) days of return authorization date. DO NOT return products to our factory without our prior consent. C.O.D. shipments will be refused; please prepay shipping charges

### **LIMITATIONS AND EXCLUSIONS**

THE WARRANTY SHALL NOT APPLY TO PROBLEMS ARISING FROM NORMAL WEAR OR FAILURE TO ADHERE TO THE ENCLOSED INSTRUCTIONS. IN ADDITION, THE FOREGOING WARRANTY SHALL NOT APPLY TO SERIAL NUMBERED PRODUCTS IF THE SERIAL NUMBER HAS BEEN REMOVED OR DEFACED; PRODUCTS SUBJECTED TO NEGLIGENCE, ACCIDENT, IMPROPER OPERATION, MAINTENANCE OR STORAGE; OR PRODUCTS MODIFIED WITHOUT INVACARE'S/MOTION CONCEPTS' EXPRESS WRITTEN CONSENT INCLUDING, BUT NOT LIMITED TO: MODIFICATION THROUGH THE USE OF UNAUTHORIZED PARTS OR ATTACHMENTS; PRODUCTS DAMAGED BY REASON OF REPAIRS MADE TO ANY COMPONENT WITHOUT THE SPECIFIC CONSENT OF INVACARE/MOTION CONCEPTS; PRODUCTS DAMAGED BY CIRCUMSTANCES BEYOND INVACARE'S/MOTION CONCEPTS' CONTROL; PRODUCTS REPAIRED BY ANYONE OTHER THAN AN INVACARE/MOTION CONCEPTS DEALER, SUCH EVALUATION SHALL BE SOLELY DETERMINED BY INVACARE/ MOTION CONCEPTS.

THE FOREGOING WARRANTY IS EXCLUSIVE AND IN LIEU OF ALL OTHER EXPRESS WARRANTIES, IF ANY, INCLUDING THE IMPLIED WARRANTIES OF MERCHANTABILITY AND FITNESS FOR A PARTICULAR PURPOSE. IT SHALL NOT EXTEND BEYOND THE DURATION OF THE EXPRESSED WARRANTY PROVIDED HEREIN AND THE REMEDY FOR VIOLATIONS OF ANY IMPLIED WARRANTY SHALL BE LIMITED TO REPAIR OR REPLACEMENT OF THE DEFECTIVE PRODUCT PURSUANT TO THE TERMS CONTAINED HEREIN. INVACARE/MOTION CONCEPTS SHALL NOT BE LIABLE FOR ANY CONSEQUENTIAL OR INCIDENTAL DAMAGES WHATSOEVER. THIS WARRANTY SHALL BE EXTENDED TO COMPLY WITH STATE/PROVINCIAL LAWS AND REQUIREMENTS

*This manual may not be reproduced or reprinted either partly or completely without previous written consent from Motion Concepts or its statutory representatives.*

*This user manual is compiled from the latest specifications and product information available at the time of publication. We reserve the right to make any necessary as they become necessary. Any changes made to our products may cause slight variations between the illustrations and explanations in this manual and the product you have purchased. If you have any questions or concerns regarding the information provided in this manual, please contact our Customer Service Department for assistance.*

## 1.0 GENERAL

**i IMPORTANT!** When applicable, please refer to the OEM Headrest Pad Owners Manual (*provided separately*) for additional safety information, warnings and cautions related to the installation and care of the headrest pad.

### 1.1 SAFETY SYMBOLS:

The following symbols are used throughout this user manual to identify warnings, cautions and important notes. It is very important that you read and understand them completely.

**i IMPORTANT!** Indicates important information which if not followed could result in damage to the product.

**! CAUTION!** Indicates a potentially hazardous situation which if not avoided could result in product damage, minor injury or both.

**! WARNING!** Indicates a potentially hazardous situation which if not avoided could result in death or serious injury.

### 1.2 SERVICE LIFE

The expected service life of this product is three years when used in accordance with safety instructions and intended use, stated in this manual. The effective service life can vary depending on frequency and intensity of use.

## 2.0 MATRX FLIPP LOXX™ MOUNTING HARDWARE

Our FLIPP LOXX™ Mounting Hardware incorporates a lock/release latch mechanism to temporarily rotate the headrest\* by 90° without requiring complete detachment. The Flipp Loxx™ Hardware is designed for use with most industry standard headrest pads, and is fully compatible with our line of Matrx Elan Headrest Pads (\*headrest pads are sold separately).

---

**! WARNING! Risk of Serious Injury**  
**Injury may occur during use of the wheelchair if a headrest is wrongly adjusted or not installed correctly. The users neck may become hyperextended in the event of a collision, or when the system is tilted or reclined.**

- *This product must be fitted by an experienced clinician or technician.*
- *Before each use, check that all mounting/adjustment hardware is securely fastened.*

**! WARNING! Risk of Serious Injury**  
**Risk of serious injury when transporting a client in a motor vehicle within a wheelchair fitted with the Matrx® FLIPP ELAN headrest hardware.**

- *Wherever practicable Motion Concepts recommends that the client is transferred out of the wheelchair into a vehicle seat using a lap and diagonal seat belt or an appropriate child safety seat.*
- *For safe transportation of a client within a wheelchair in a motor vehicle, refer to the user manuals for the wheelchair and the tie-down and occupant restraint system (WTORS).*

**! WARNING! Risk of injury**  
• *Inspect the headrest hardware to ensure that there are no missing or damaged parts.*

**! WARNING! Risk of injury**  
• *Before drilling or modifying any back shell, always contact the back manufacturer to ensure the back is recommended for a headrest application.*

---

## 2.1 MATRX FLIPP LOXX™ INSTALLATION/SET-UP INSTRUCTIONS:

(Refer to images provided in **Section 2.3: ADJUSTMENT OVERVIEW** (p. 6-7))

**OPTIONAL LOCKING SCREW** (see **Fig 1**): The locking lever (**A1**) may be replaced with the optional 30mm locking screw (**A2**) provided. Remove/unscrew the lever from the upper clamp housing and retain the original washer (a). Being careful to keep the clamping block (**b**) in position inside the upper pivot, use the 5mm hex key (provided) to install the replacement locking screw (with washer).

### **MOUNTING CLAMP INSTALLATION:** (see **Fig 2**):

Secure the mounting clamp assembly (**E**) onto back shell\* using hardware provided. If additional clearance is required, install the spacer plate and long screws (**c**) provided. (*\*note: the mounting clamp hardware is installed from the inside of the back shell*)

### **FLIPP LOXX™ HARDWARE INSTALLATION:** (see **Fig 3**):

- Loosen set-screw (**d**) and remove the lower D-Ring (**D2**) from the headrest post (**1**).
- Install the headrest post (**F**) into the mounting clamp assembly (**E**), and adjust the headrest post to the desired height/position (**2**). (*note: loosen upper D-Ring if necessary*)
- Tighten the mounting clamp (**E**) to secure the headrest post in position (**3**).
- Adjust the upper D-Ring (**D1**) so that it rests flush with the top of the mounting clamp (**4**), then secure the D-Ring into place via the set-screw (**d**).
- Reinstall and secure the Lower D-Ring (**D2**) onto the headrest post (**5**) so that it rests flush with the bottom of the mounting clamp assembly.

### **HEADREST POST MODIFICATIONS:**

If necessary, the headrest post (**F**) can be cut (shortened) to prevent any collision interference along the back of the wheelchair/seating system. (*Note: After cutting the post, the plastic end cap (**G**) can be removed and re-installed into the newly cut post*).

### **HEADREST PAD ADJUSTMENT:** (see **Fig 4**):

Loosen the locking lever (**A1**) or locking screw (**A2**) on the upper pivot assembly (**B**). Slide the horizontal bar (**C**) to the desired depth inside the upper pivot (**1**), and adjust the headrest angle by pivoting/rotating the upper pivot to achieve the desired headrest position (**2**). Re-tighten the locking lever/locking screw (**B**) to secure the headrest into position.

### **FLIP-BACK LATCH MECHANISM:** (see **Fig 5**):

To 'flip-back' the headrest, depress the release button (**H**) on the latch mechanism (**1**). To return the headrest to its original position, simply lift upward on the headrest until the latch mechanism is re-engaged (**2**). (The latch will lock in place automatically)

### **ELAN HEADREST PAD\* INSTALLATION:** (see **Fig 6**):

Position the headrest mounting collar over the pivot ball on the horizontal bar (**1**); then align and secure the mounting collar to the headrest pad (**2**).

(*\*NOTE: Headrest sold separately*).

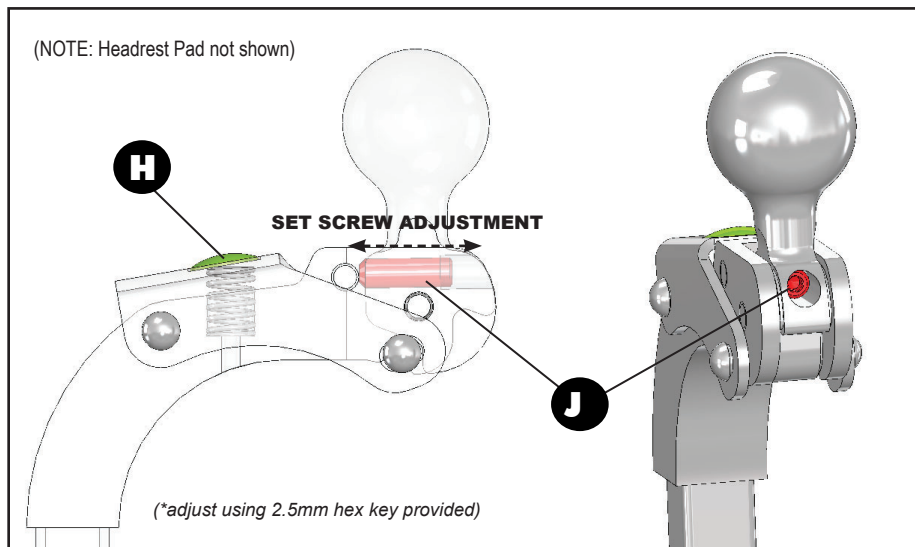
## 2.2 FLIPP-LOXX SET-SCREW ADJUSTMENT INSTRUCTIONS

**i IMPORTANT!** If the latch mechanism on the Flipp headrest assembly has unwanted play (too loose), **or** does not pivot freely (too stiff), a **set-screw adjustment** will be required. Refer to the set-screw adjustment instructions below.

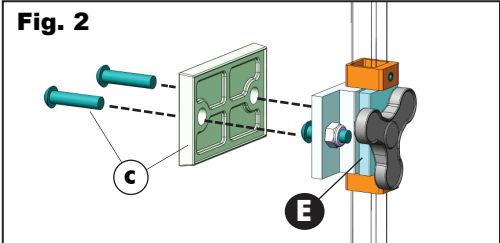
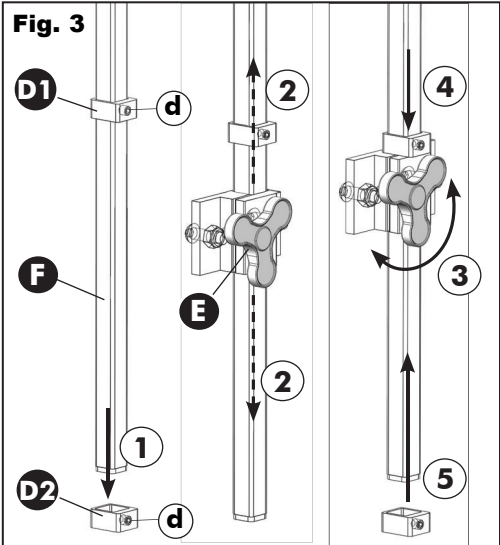
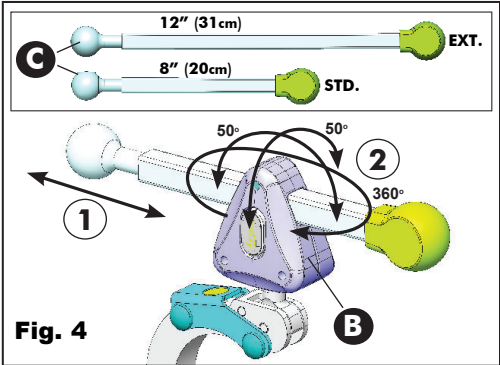
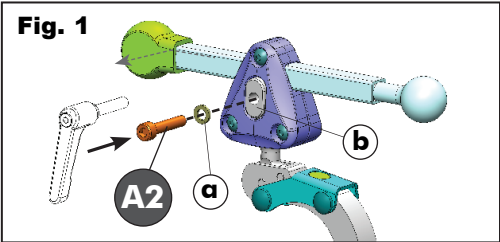
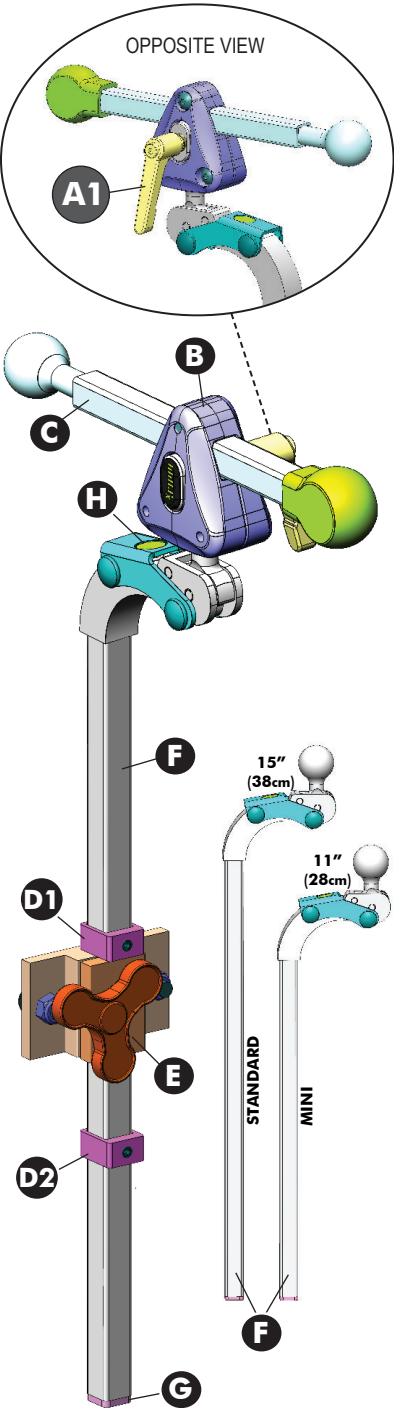
### SET SCREW ADJUSTMENT INSTRUCTIONS: (see images below)

1. With headrest in the upright position, locate the **set screw (J)** at the rear of the headrest pivot mount.
- 2a. If there is too much play in the latch mechanism:
  - adjust the set-screw **clockwise** to tighten
- 2b. If the latch mechanism does not pivot freely when the **release button (H)** is depressed:
  - adjust the set-screw **counterclockwise** to loosen
3. Test the release button/latch mechanism following adjustment, and readjust the set-screw, as necessary, until proper set-up is achieved

**⚠ CAUTION!** If the set screw is over-tightened, the latch release button will not function.



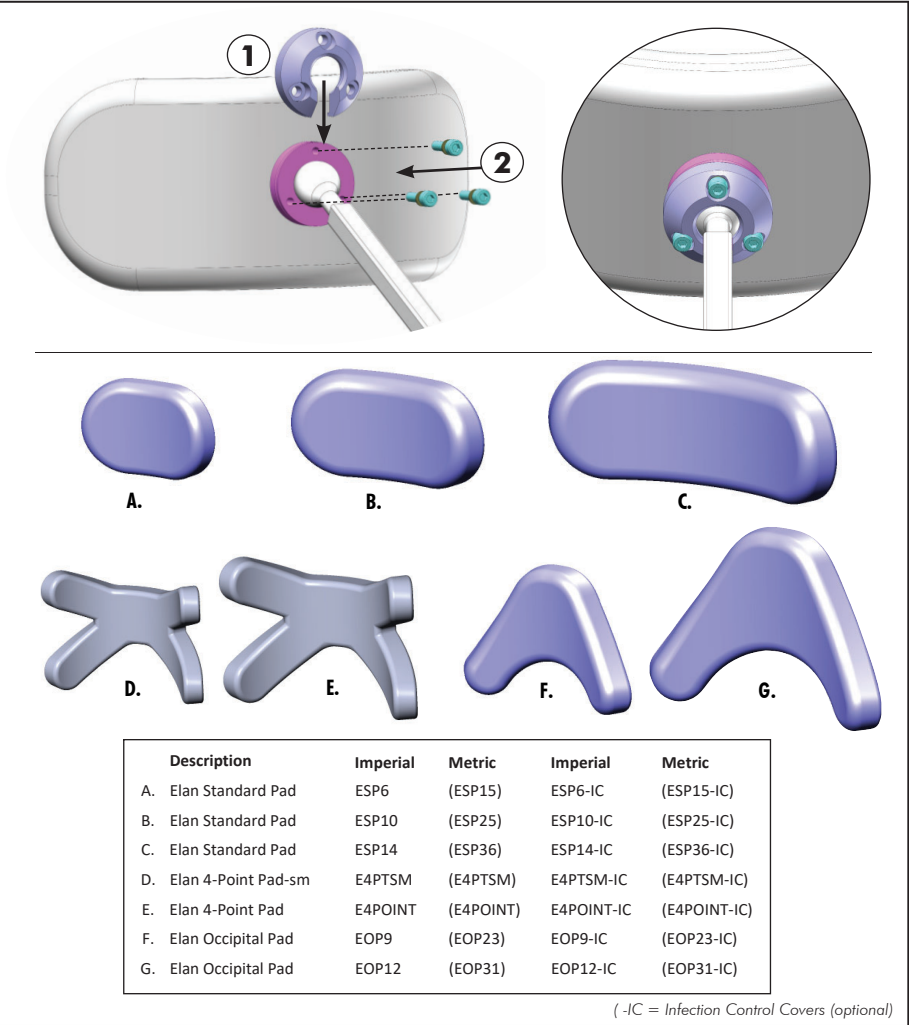
2.3 FLIPP LOXX™ HEADREST HARDWARE, ADJUSTMENT OVERVIEW



**Fig. 5 FLIP BACK LOCK/RELEASE MECHANISM**



**Fig. 6 MATRIX ELAN HEADREST PAD INSTALLATION (SOLD SEPARATELY)**





---

**Motion Concepts**[www.motionconcepts.com](http://www.motionconcepts.com)

---

**USA**

700 Ensminger Rd. Suite 112  
Tonawanda, NY 14150  
888-433-6818

**Canada**

505 Cityview Blvd, Unit 1  
Vaughan, Ontario L4H 0L8  
905-695-0134  
866-748-7943

---



Copyright © 2025 Motion Concepts LP. All rights reserved. Republication, duplication or modification in whole or in part is prohibited without prior written permission from Motion Concepts. Trademarks are identified by ™ and ®. All trademarks are owned by or licensed to Invacare Corporation or its subsidiaries unless otherwise noted.

StarTex is a trademark of FR Systems International

